



Matlock *Alive*

Newsletter

Christmas / Winter 2008

A SPARKLING START TO THE CHRISTMAS SEASON FOR MATLOCK

Once again Matlock is staging its very popular Victorian Christmas Weekend, which is to be held this year over the weekend of Friday, Saturday & Sunday 5th, 6th & 7th December.

There will be a full programme of entertainment each day from 10.00 a.m with award winning Children's entertainment including Zios & Mimbo Robotic Entertainers. Chester the Clown, Jay Linn's Circus Arts, and Magic by Mix & Mingle. James McKay will have his Famous Owls on Display, and Father Christmas has promised that if the children are very good he will try to send his favourite Reindeer to be present at the event. There is also musical entertainment from Von Winkler's Bavarian Band and local artist Mark Handley & friends.

On the Saturday there will be the Christmas Parade through the streets of Matlock co-ordinated by Caroline Dale of The Red House Stables at Darley Dale including Father Christmas and The Christmas Celebrities.

This year for the first time "Matlock Live" will be helping to involve the local community in the parade.

Switching on the Christmas Lights will be the popular T.V and Radio presenter Sara Blizzard. Presenting the weather is not the only talent that Sara possesses, as she has trained in dance and Drama, and she has appeared on stage in two very popular musicals, "Joseph & His Technicolour Dreamcoat", and "Chitty Chitty Bang Bang"

At 7.30p.m. in the evening Matlock Musical Theatre will present their Candle Lit Christmas Concert in St Giles. Church.

On Sunday at 4.30 p.m. on the Bandstand stage Lee Michaels will present his tribute

to Robbie Williams "THE ULTIMATE ROBBIE" and this will be followed by a Christmas Firework Display.

There will once again be two Marquees and one has had to be extended to accommodate the huge demand for space. More stalls will this year be open on the Friday. There will be around 150 stalls including a selection of crafts, Local Produce and a large selection of Christmas gifts for all the family. This year will see the introduction of a new Food Court. There will be the ever popular mulled wine stall plus hot potatoes, drinks and other seasonal foods. There will be a Christmas Fun Fair featuring Proctor's Classic Dodgems, and much more.

"All is set for this to be the best ever Victorian Christmas Weekend Matlock has staged," said Councillor Geoff Stevens the chairman of the organising committee." It has become one of the biggest Christmas attractions in the region, and this is Matlock at its very best. There are not many Towns which have such a wonderful Christmas Party." he added.





Victorian Matlock Christmas Weekend

Friday, Saturday &
Sunday 5th, 6th & 7th
December 2008



FRIDAY

Entertainment from 10am throughout the day

- James McKay with his famous Owls
- Street Organs
- Award winning Children's entertainment
- Zios and Mimbo Robotic Entertainers
- Strolling Jazz



SATURDAY

Entertainment from 10am throughout the day

- James McKay with his famous Owls
- Street Organs
- Von Winklers Bavarian Band
- Award winning Children's entertainment
- Chester the Clown
- Zios and Mimbo Robotic Entertainers
- Jay Linn Circus Arts
- Mix & Mingle Magic
- Santa's Grotto
- Mark Handley & Friends with songs from the shows

Christmas Parade with Coach & Horses

from Red House Stables including Father Christmas and the Christmas Celebrities



4.45pm Christmas Lights

Switch on by BBC weather presenter Sara Blizzard

Sara Blizzard is the popular weather presenter who appears on BBC's 'East Midlands Today', but was trained in dance and drama. She has appeared on stage in Joseph & His Technicolour Dreamcoat' and in 'Chitty Chitty Bang Bang' at the Apollo Theatre, Coventry.



7.30pm in St. Giles Church

Matlock Musical Theatre present their Christmas Concert

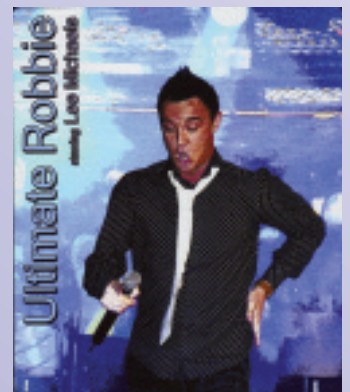
SUNDAY

Entertainment from 10am throughout the day

- James McKay with his famous Owls
- Street Organs
- Von Winklers Bavarian Band
- Award winning Children's entertainment
- Chester the Clown
- Zios and Mimbo Robotic Entertainers
- Jay Linn Circus Arts
- Mix & Mingle Magic
- Santa's Grotto
- Mark Handley & Friends with songs from the shows

4.30pm on the Bandstand Stage - Ultimate Robbie

Lee Michaels presents his tribute to Robbie Williams



Followed by a Christmas Firework Spectacular



For further information contact Matlock Town Council

Imperial Road, Matlock, Derbyshire DE4 3NL Telephone: 01629 57488 Email: townclerk@matlock.gov.uk www.matlock.gov.uk
'Matlock Town Council works in partnership with the Matlock Business Group and various other organisations within the Town to stage this event and welcome the involvement of like-minded individuals or organisations.'



East Midlands Trains introduces

new hourly, direct trains from Matlock

East Midlands Trains has announced exciting plans for a new hourly direct service between Matlock, Derby and Nottingham as part of its new timetable, which will be introduced on Sunday 14 December.

The new timetable will offer some of the biggest improvements on the network in several years, with new services, more trains on key routes, faster journey times, better connections and a more regular service across the whole network.

The announcement shows that passengers in Derbyshire will be one of the greatest beneficiaries of East Midlands Trains new timetable. Here's how passengers from Matlock will instantly benefit from 14 December:

- **Introduction of additional services on the route between Matlock and Derby**

The frequency of trains along this route will increase to hourly, meaning that passengers will have the benefit of an hourly service to Derby.

- **Through trains from Matlock – Derby – Nottingham**

One of the added benefits of these additional services is that on weekdays, services will go through to Nottingham, resulting in an hourly service between Matlock and Nottingham. The new Saturday service between Matlock and Nottingham will start in Summer 2009, providing a much needed link in readiness for the busy summer season.

Commenting, Tim Shoveller, Managing Director of East Midlands Trains said: "In addition to the very visible changes we are making such as £90m of investment in



refurbished fleet, depots and stations, 14 December sees a completely new, vastly improved timetable for our network.

"The start of our December timetable will mark the start of a new era in train travel for passengers from Matlock. As well as providing better links to Derby for people to shop, work and play, our direct trains through to Nottingham will make it easier than ever before for people to link with other cities in our region."

Derbyshire County Council's cabinet member for environmental services, Councillor Brian Lucas, said: "The increase in trains all along the Matlock to Derby line will be much appreciated by local people. The train now offers a fantastic alternative to the car."

David James CEO of the Peak District & Derbyshire Tourist Board said: "We are delighted to see the improvements in train services between Matlock, Derby and Nottingham. This new timetable is very exciting for visitors to the area with new hourly services into Matlock linking the cities to more rural Derbyshire and the Peak District."

Copies of the new timetable will be available from Friday 14 November at East Midlands Trains' stations and on the website, eastmidlandstrains.co.uk. Passengers can also register to receive their own personalised timetable when full details are released in November, register now on eastmidlandstrains.co.uk/myjourneys.

Victorian Matlock Christmas Weekend & Market

 **Friday, Saturday & Sunday**
5th, 6th & 7th December 2008 
From 10.00am Daily

- Over 150 stalls in two marquees including large craft section, Local Produce, etc.
- Mulled Wine, hot potatoes, roast chestnuts and other seasonal foods
- Continental Market
- Santa's Grotto
- Funfair with Children's Rides and Stalls featuring Proctor's Classic Dodgems
- and a Feast of Family Christmas Entertainment



'Festive Focus - Shop Local'

As part of the Victorian Weekend the Matlock Partnership together with the Matlock Business Group will be launching Matlock 'Festive Focus' weekend encouraging everyone to explore and enjoy their local shops and services.

The weekend will feature a window dressing competition where all shop keepers are being challenged to decorate their shop fronts in the most festive possible way. The competition will be judged by Cllr Cate Hopkinson, the Mayor of Matlock.

We are interested in what you think of this idea to encourage and support local trade and welcome any more ideas – feel free to contact the partnership via Catherine at the Town Council catheriner@matlock.gov.uk or on (01629) 57488



MATLOCK TOWN COUNCIL

Imperial Rooms
Imperial Road
Matlock
Derbyshire, DE4 3NL

Phone: 01629 57488
Fax: 01629 580174
www.matlock.gov.uk

Town Clerk:
Susan Smith
townclerk@matlock.gov.uk

Community Development:
Catherine Rawas
Mob: 07964053129
catheriner@matlock.gov.uk

Mayor Cllr Cate Hopkinson
41 Overdale
Matlock
DE4 3ES
Tel: 01629 56822

Cllr Geoff Stevens
17 Allen Hill
Matlock
DE4 3LR
Tel: 01629 57677

Cllr David Barker
3 Paxton Close
Matlock
DE4 3TD
Tel: 01629 55248

Cllr Sue Burfoot
12 Megdale
Matlock
DE4 3JW
Tel: 01629 584301

Cllr Martin Burfoot
12 Megdale
Matlock
DE4 3JW
Tel: 01629 584301

Cllr Barrie Tipping
8 Hawleys Close
Matlock
DE4 5 LY
Tel: 01629 582415

Cllr Steve Flitter
14 Hurst Rise
Matlock
DE4 3EP
Tel: 01629 582065

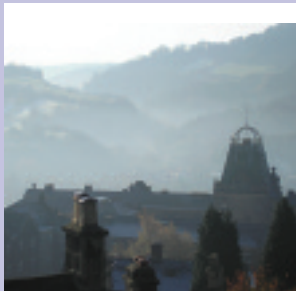
Cllr Ann Elliott
48 Wolds Rise
Matlock
DE4 3HJ
Tel: 01629 55289

Cllr Tony Rosser
233 Starkholmes Road
Matlock
DE4 5JE
Tel: 01629 582855

Cllr Barry Hopkinson
41 Overdale
Matlock
DE4 3ES
Tel: 01629 56822

Cllr Ursula Lunn
52 Overdale
Matlock
DE4 3ES
Tel: 01629 581571

USEFUL INFORMATION



Medical NHS Direct Line
0845 4647

Emergency Services
In case of an emergency, you can contact the police, fire service or ambulance service on 999 or 112.

Police: 0845 123 3333

Crime Stoppers:
0800 555 111
www.crimestoppers-org.uk

Derbyshire Fire & Rescue Service: 01332 771221

Citizens Advice
29 Bank Road
Tel: 01629 583539
E-mail:
Matlock@cabnet.org.uk

Library
Steep Turnpike
01629 582480

Tourist Information
Crown Square
01629 583388



Travel
Travel Line
0870 608 2 608

National Rail Enquiries
08457 48 49 50

Trent Barton Buses
01773 712265
www.trentbarton.co.uk

East Midlands Airport
01332 852852

Matlock Lido
01629 582843

Derbyshire Dales District Council
Town Hall
Bank Road
01629 761100

Emergencies
01159 939 0808

Refuse & Recycling
01629 761215

Environmental Health
01629 761212

Derbyshire County Council
01629 580000

RSPCA
0870 55 55 999
www.rspca.org.uk

Neighbourhood Watch
020 7963 0160
www.neighbourhoodwatch.net

Post Office Services
0845 7223344

Flood Line
0845 988 1188
www.environment-agency.gov.uk

Childline
0800 1111



MatlockAlive
Newsletter
is written and edited by Matlock Town Council.
Every effort is made to ensure that information supplied is accurate, however, no liability can be accepted for any loss, damage or inconvenience caused as a result of inaccuracy or error in the information contained in these pages.