



MATLOCK TOWN COUNCIL

ANNUAL REPORT 2006-2007

**(Incorporating, Mayors' Report, Environmental Audit and
Financial Statement)**

CONTENTS:

Page

2	Summary of the work of the Town Council
7	Councillors' details
8	Mayors' Report
10	Green Charter – Annual Environment Audit
14	Balance Sheet
15	Profit and Loss Statement
20	Yearly Trends – Charts
22	Supporting Notes

SUMMARY OF THE WORK OF THE TOWN COUNCIL DURING 2006-2007

INTRODUCTION

The Council has 11 elected members. 2006-07 saw no change in its membership. All Councillors strive to ensure the effective provision of services for both residents and visitors to Matlock. The Council's activities are funded, in the main, by the Council precept.

THE COUNCIL

The full Council oversees all activities that the Council undertakes. It has two committees, Christmas and Matlock in Bloom, and whilst the Committees welcome involvement from members of the public and local community groups, they have no delegated powers – the full Council makes all decisions.

The full Council meets at 7.00pm in the Small Hall of the Imperial Rooms in Matlock, on the first and third Monday of each Month (apart from August and January, when only one meeting is held). Committees meet by agreement. Prior notification of meetings is always given via the Imperial Rooms notice board on the front of the building and members of the public and press are always welcome to attend any meeting.

Business Plan

The Council have a Business Plan with the overall aim "To conserve and improve Matlock as an attractive and sustainable place in which to live, visit and to do business."

The 4 main Priorities of Matlock Town Council are to:

- Support residents and community & voluntary groups
- Develop a prosperous business community
- Protect and enhance the environment
- Improve the Council

'Champions' have been appointed to oversee these specific areas of the Council's work.

Quality Council Status

The Clerk has attained the CiLCA certificate, which enables the Council to apply for Quality Council Status should they wish to do so.

Planning

The Town Council is consulted on planning applications in their area. All applications, for discussion at meetings, are advertised on notice boards throughout the Town. This enables members of the public to submit their comments to both the Town Council and the District and County Councils.

The Environment

An Environmental Audit is produced each year by the Councillor with special responsibility for the Environment. The Council maintains several areas of land throughout the town for the benefit of the local populace – Denefields, the Princess Diana Memorial Garden (Hillside), Kiln Park and a new addition, Bailey’s Tump – and provides hanging baskets and planters throughout the Town. A copy of this years’ environmental audit is attached.

Allotments

The Council manages 52 allotments at Chesterfield Road in Matlock. All the allotments are let and there is a waiting list. A competition is held annually as part of the Matlock in Bloom Competition, encouraging allotment holders to keep their allotments clean and tidy.

Grant Aid

One of the duties of the Council is to consider payment of Grant Aid to local community groups and organisations. Many groups have benefited throughout the year from this aid. A list can be found in the financial report.

Publicity

The Council believes that it is important to keep its residents informed of their activities. They have 7 noticeboards throughout the town with 3 of these being in the town centre. Members of the local press normally attend council meetings.

The new website has been a great success, attracting increasingly more and more visitor numbers. It is proving to be a valuable community resource.

It is planned to publish a Council newsletter four times a year.

Twinning

Twinning became popular after the Second World War and was encouraged to break down barriers and prejudices between nations with the aim that this could help prevent another global conflict.

Matlock is twinned with Eaubonne, near Paris. Regular visits take place between the two communities and members of the public are welcome to join the Matlock/Eaubonne Twinning Association. Regular fundraising events are held throughout the year. The current Mayor of Matlock is the president of the Association.

Imperial Rooms

Matlock Town Council runs the Imperial Rooms, a community facility in the centre of Matlock. It is currently well used by all groups within the community, however buildings of this nature in Matlock are in short supply. The Council are conscious that to increase the fees to cover costs for this valuable facility would exclude many well deserving groups of people and constantly strive to keep an even balance. This year the Council spent £12,180 on improvements to the Imperial Rooms (equipment and heating) and in addition commissioned

a local architect to work on future plans for the rooms as part of the Matlock Masterplan. The Reception is now fully staffed and is open Monday to Friday from 9.30am to 4.30pm.

The Civic Function

This year the Civic Service was held at All Saints' Church on Smedley Street, followed by the 'reception' at the Imperial Rooms. The Mayor has represented the Town at various functions throughout the County and has also undertaken a number of local engagements. Her report is included in this document.

Walking Leaflets and Town Guide/Trail

A new Town Trail has been produced and distributed, along with a range of 4 walks leaflets which have been redesigned and reprinted. These publications were jointly funded by emda and Matlock Town Council.

Staff

OFFICE		OTHER	
Town Clerk	Susan Smith	Caretaker	Jennifer Land
Projects and Regeneration Officer	Lindsay Allen	Caretaker	Herbert Bennett
Clerical Assistant (Finance)	Karen Jenkinson	Outdoor Worker	James 'Jamie' Brocklehurst
Clerical Assistant	Indre Plieskyte	Outdoor Worker	Howard 'Fred' Furniss

All the Council staff are committed to helping residents and visitors to Matlock.

EVENTS AND ENTERTAINMENT

The Environment

For a full overview of the Council's environmental activities please see the environmental audit.

Matlock In Bloom Garden Competition

Residents are invited to enter the annual garden competition run by the Council each year. The standard of entries is always high and the judges are constantly impressed by the ingenuity of some of the entries. Alongside the garden competition is a smaller competition run for the children of the local schools, the Sunflower Competition and an award for the best kept allotment. Prizewinners of both competitions are invited to attend a presentation evening in September of each year.

The Matlock in Bloom committee also advises on the bulb planting programme throughout the town and suggests various ways of enhancing the townscape.

East Midlands In Bloom

The Council once again entered the East Midlands in Bloom Competition. Matlock usually ranks highly and have won the Best Small Town Category in 2000. This year (Summer 2006) were awarded Silver Gilt in the Town Category.

Discover Denefields

The Council, working with Groundwork Derby and Derbyshire Dales, have been developing a programme of community involvement on Denefields, two ancient fields crossed by footpaths on a slope just above the town centre. The Council manages these fields on behalf of Derbyshire Dales District Council and hope that with the help of Groundwork they will be able to encourage local residents to take pride in this valuable asset to the town. Working parties are held each Thursday morning, led by a Groundwork Project Officer.

Community Events:

Remembrance Day

As usual, the Remembrance Day service was co-ordinated by the Royal British Legion who work in conjunction with the Town Council. The Council holds its own services at Pic Tor and Starkholmes memorials with the main parade being through the Town to the War Memorial at Hall Leys Park.

Band Concerts

A series of band concerts were organised by the Council in Hall Leys Park throughout the summer. The programme is to be expanded.

Farmers' Markets

The Farmers' Market in Matlock has been running for a year. In June the market was given a trial outside in Hall Leys Park, however due to several factors, the market has now moved to its permanent location at the Imperial Rooms. This offers traders both indoor and outdoor pitches, electricity and a café (run by the mayor, in aid of the mayors' charities). The markets are held on the third Saturday of each month. The markets continue to be supported by New Environmental Economy (NEE) who are covering 50% of costs.

Christmas

Christmas Weekend - Along with the Matlock Business Group, the Town Council organises the Christmas Festival annually on the first full weekend of December. Trees and illuminations deck the town to make for a very festive feel. After the rather inclement weather over the weekend in 2005, a marquee was hired to provide protection from the elements for the traders and visitors. This proved very successful with many positive comments being received. The new Face Painting and Crafts for Children area also proved popular. It is hoped to continue along the same lines next year.

A Christmas Carol – Organised by the Council and Peak Theatre, this event concluded the Christmas Weekend celebrations. Two performances had to be arranged due to its popularity.

Summer Kids Clubs – Hall Leys Park

Held during the School Summer Holidays, these events have proved very popular with local children. At one of the sessions, the children painted murals under the careful guidance of a local artist. The murals were then installed at Matlock Railway Station, helping to enhance its appearance to visitors and those who use the station.

Saturday Morning Kids Clubs

The Saturday Morning Kids Clubs have been a great success and it is planned that they will continue next year (2007). The two hour sessions are aimed at children between 7 and 11 years old and are well attended. They are part funded by Awards for All.

Regeneration Initiatives:

Matlock Regeneration

Throughout the year, representatives of the Council have been attending meetings relating to the Matlock Masterplan and the Sainsbury's development. Work is well under way for the new road and Sainsbury's store, both of which are due to open in Autumn 2007 and with the Masterplan nearing completion and the promise of over 400 new homes in Cawdor Quarry (to be named Matlock Spa), exciting times are ahead for Matlock.

Imperial Room Refurbishment

Following the 'healthcheck' in 2004 and the Masterplan in 2006, a need was identified for a wider range of community facilities within the Town. More 'space' was required for the arts, exhibitions, performing arts and community groups. In November 2006, the Town Council commissioned a Architectural Feasibility Study to identify some of the options that would be available to them should they wish to redevelop the Imperial Rooms. Should funding be identified (and obtained) the Council will initiate a full consultation process in order that all members of the community can be consulted prior to any work taking place.

Catalyst Programme

Working with Darley Dale Town Council, Connexions Derbyshire (the Accountable Body) and the Local Strategic Partnership, the Council helped secure funds to help the youth in our area. A two year programme will help ensure that young people between the age of 13 and 25, supported by a project worker, learn to initiate and develop their own enterprises obtaining valuable skills and experience in the process.

Matlock Business Network

Whilst the Business Network meetings got off to a good start, numbers of local businesses attending dwindled in the latter half of the year. Sessions held to discuss Sainsbury's, the Masterplan and the Shop Local Campaign were well attended. A more social network is currently under trial, being run by a local business. The Shop Local campaign is progressing with the Project Officer working with Ashbourne Partnership in sharing resources.

Adopt a Station

Members of the Council met with representatives of Peak Rail, Derwent Valley Rural Transport Partnership, Friends of the Derwent Valley Line and Central Trains to discuss the possibility of formally adopting Matlock Railway Station. Meetings then took place at the Imperial Rooms and on the Railway Station platform to encourage individuals to become involved in the group. The group is now ready to submit their application to Central Trains and to undertake a safety briefing before work can commence at the Station.

CONCLUSION

Matlock Town Council works hard to keep local resident and visitors to Matlock well informed. With the planned regeneration initiatives starting to take effect, Matlock is set to become a more vibrant and welcoming place to visit and live.

The Council welcomes views from any visitors and residents in Matlock on any aspect of the town and will endeavour to answer any queries posed to the best of its ability.

MAY 2006/2007

MATLOCK TOWN COUNCIL

Contact Details

Mayor	Cllr Mrs Susan Burfoot 12 Megdale, Sheriff Fields Matlock DE4 3JW (Dimple Road East)	584301 sue.burfoot@derbyshiredales.gov.uk
Deputy Mayor and Member Treasurer	Cllr David Barker 3 Paxton Close, Sheriff Fields Matlock DE4 3DT (Dimple Rd West & South of River)	55248 davidatmatlock@aol.com
Responsible for Finance and Administration	Cllr Martyn Moss 65 Wolds Rise, Cavendish Park Matlock DE4 3HJ (Nth of Jackson Rd & Wellington St)	56764 martyn@martynmoss.orangehome.co.uk
Responsible for Environment	Cllr Martin Burfoot 12 Megdale, Sheriff Fields Matlock DE4 3JW (Dimple Rd West & South of River)	584301
	Cllr Barry Hopkinson 41 Overdale Matlock DE4 3ES (Matlock Green)	56822 BrryHpk@aol.com
	Cllr Les Bradbury Ash Cottage 123 Chesterfield Road Matlock DE4 3FS (Dimple Road East)	582596
	Cllr Stephen Flitter 14 Hurst Rise Matlock DE4 3EP (Hurst Farm)	582065 steveflittermatlock@hotmail.com
	Cllr Geoff Stevens 17 Allen Hill Matlock DE4 3LR (Nth of Jackson Rd & Wellington St)	57677 geoff.stevens@derbyshiredales.gov.uk
	Cllr Barrie Tipping 8 Hawleys Close Matlock DE4 5LY (Chesterfield Road East)	582415 bt8773@aol.com
	Cllr Tony Rosser 233 Starkholmes Road Matlock DE4 5JE (Starkholmes & Riber)	582855 tony_rosser@hotmail.com
	Cllr Mrs Ursula Lunn 52 Overdale Matlock DE4 3ES, (Hurst Farm)	581571 ursula.lunn@derbyshiredales.gov.uk
Town Clerk	Mrs Susan Smith Imperial Rooms - office	57488 townclerk@matlock.gov.uk

Projects and Regeneration	Mrs Lindsay Allen Imperial Rooms – office	57488 <i>projects@matlock.gov.uk</i>
--------------------------------------	---	--

MAYORS' REPORT 2006-07

As my term as Mayor comes to an end, I hope that Councillors, staff and more importantly, the people of Matlock, feel that I have served the office of Mayor with dignity, fairness, integrity and impartiality, all of which qualities I hold dear.

I have certainly enjoyed representing Matlock and meeting lots of interesting people. This is a community to be proud of, full of people with enormous enthusiasm and care for others and who go about their business with the utmost integrity – a lesson to us all.

It has been a privilege and a pleasure to have been invited to events in Matlock and the surrounding area as Mayor. I have been met on every occasion with goodwill and kindness. Indeed, my first engagement was to Belper Unitarian Chapel to a service which celebrated community spirit. This was quickly followed by a weekend visit to Eaubonne, our twin town near Paris organised by the Twinning Associations of both towns. I was proud as Mayor to be President of META, as I hope have previous Mayors. There is an enormous spirit of friendship between our two communities and long may this continue.

During my busy and varied time as Mayor, I have enjoyed meeting the people of Matlock who give their time and energy to serving this community, especially the many talented younger people of the town. Amongst these I include those youngsters involved in Matlock Live, Highfields School Musical Extravaganza, an exhibition of art work from local primary schools, the creative work re the World Cup at Castle View Primary School, the mini football tournament to celebrate Fairtrade, guides talent show, Peak Theatre School's performance of 'A Christmas Carol' during the Christmas weekend, and the scouts car races.

Formal engagements have included the Annual Pilgrimage to the War Memorial at Crich Stand, Rotary and Lions Club dinners, the High Sheriff's reception and Civic Service and the wonderfully moving Remembrance Day Services.

There have of course been the many Civic Services (sometimes known as the Chain Gangs on parade) which I have thoroughly enjoyed.

One highlight for me has been running the monthly Mayors' Café at the Farmers' markets here in the Imperial Rooms using Fairtrade products and all profits to my charities.

My own Civic Service was a highlight for me – where lots of people representing the community of Matlock came together, along with friends and family to celebrate this town. My special thanks go to Rev Richard Reade and other members of All Saints Church, and to Ann, Vic, Andrea and my daughter Clare for the lovely food.

My thanks also go to those Councillors and their wives who have helped and supported by throughout the year and to the staff at the Town Council who have made my year both enjoyable and smooth-running. How chuffed have I been to say I have had my own PA! Thank you Indre.

I must also pay tribute to all my friends and colleagues at Highfields School where I work, - they have been a huge support and help to me, not least in helping me to raise £100's for my Mayors Charity Appeal. Also again to my daughter Clare, Ann Wain and their friends who have worked tirelessly to help me raise money – including persuading me to walk around Carsington Water on a sponsored walk wearing the chain!

My chosen charities for the year have been 'When you wish upon a star', chosen by pupils in last years Year 7 and 8 by means of a vote at school, and Greenaway Workshop for the Disabled at Hackney. I am proud that the total raised for charity has been almost £3,000 including a collection at my Civic Service which went to the St James Hospital in Lesotho.

I would also like to thank the members of the public who have turned up to our meetings, to our many visiting speakers, to the Police and to the press who have also served us well.

Matlock has seen big changes during the last year – the cutting of the first sod at Sainsburys in Cawdor Quarry, the progresion of the Matlock Masterplan, work in Hall Leys Park and Pic Tor and many other projects. I know that this town will go forward from strength to strength and that the Town Council, under the leadership of the new Mayor, will go forward in its work in serving the local community.

Sue Burfoot

Cllr Sue Burfoot
Mayor of Matlock, 2006-07

GREEN CHARTER – ANNUAL ENVIRONMENT AUDIT, MAY 2006

Cllr Martin Burfoot, Councillor with responsibility for the Environment

COUNCIL MANAGEMENT

The Council has striven to maintain adequately the 26 miles of public rights of way for which we have responsibility to clear obstructing vegetation, under our contract with the County Council. However, the competing workload for Council staff, given other site maintenance and ‘**Matlock in Bloom**’ responsibilities (eg. Denefields, Hillside, Kiln Park, Bailey’s Tump, the allotments, seats, bus shelters, planting beds and planter etc.) has meant that some less routine tasks have been undertaken by other agencies eg. BTCV and **Groundwork** Derby and Derbyshire, with whom the Council has had a contract over most of the past year. We are grateful for their promotion and implementation of conservation projects and training events, with an enthusiastic group of volunteers. Hopefully, this group of local residents will not be deterred by the recent departure of the Groundwork Project Officer.

Council use of sustainable, renewable and non toxic products has, as ever, been maintained wherever possible.

Two new, energy efficient condensing boilers have been installed in the **Imperial Rooms** and this should both increase temperatures in winter and reduce costs. The Council has also commissioned an energy audit of the Rooms, with a view to installing solar panels etc. if feasible. However, the previous plans to revamp the toilets have been deferred in favour of a far more comprehensive scheme, which will only be possible with substantial external funding. This would ease the cramped conditions for Council staff and storage endured over recent years, and provide more and varied accommodation for community organisations and groups as well as commercial bookings, ie. a proper community centre, which the town badly needs. Discussions so far have only involved meetings with representatives of local performing arts groups and looking at a local architect’s sketch plans, which the Council’s Regeneration Officer has used to seek possible funding sources. Councillors have also made clear their opposition to wholesale demolition of these buildings.

WILDLIFE CONSERVATION

Denefields, a haven for wildlife close to the town centre, has been relatively undisturbed for hundreds of years and the Town Council has been a worthy guardian of the site. With help from the contract with Groundwork, and an enthusiastic and hard working group of volunteers, a number of conservation tasks have been carried out in recent months, as well as by BTCV last year.

Apart from being our voluntary warden for Denefields, Bill Quinlan has been one of the group of volunteers, so credit must go to him for his effort, enthusiasm and regular involvement. **Kiln Park** and **Hillside** are two small areas of open space which have continued to be managed by the Council as low key amenity sites, with nature conservation an important priority.

Bailey’s Tump – work on this historic, Second World War site is now virtually completed, and credit must go to the Town Council’s partner, Matlock Civic Association, for the hard work of its members, especially Ken Parker, in organising the Heritage Lottery funding and implementing the agreed scheme, which hopefully will be a credit to the local community as an important area of

open space as well as a grassland and hedgerow habitat. Ongoing and constant by the Council's staff will be vital if the site is to be maintained in its present character over future years.

LITTER AND WASTE MANAGEMENT / RECYCLING

The Town Council, as well as the Civic Association have continued to press the District Council to improve their routine maintenance, in order to minimise the number of litter 'blackspots' in the town centre, in particular following busy summer weekends and on privately owned land adjoining the public highway, where mainly business proprietors need to be persuaded to take their responsibilities more seriously. Chewing gum and cigarette butts also remain an eyesore in the town centre, and there is still no evidence of the former problem being tackled.

The continuing lack of a **Civic Amenity Recycling Site** to serve the central Dales poses a problem for residents and has undoubtedly increased the incidence of fly tipping in lay bys and on road verges around Matlock. The Town Council, Civic Association and residents need to be vigilant and vociferous in seeking to retain the ever popular Saturday morning lorry collection service for bulky household waste.

Over a year since the advent of the **Clean Neighbourhoods and Environment Act** there is still no evidence that any District Council staff have been trained to issue fixed penalty notices to 'littering' or dog fouling etc. offenders. The Town Council has been forced to provide several new **dog waste bins**, ever since the District stopped funding them, so the new Act has in practice had little effect in Matlock, as far as we are aware.

As in previous years, the lack of regular **road sweeping** and **gully emptying** continues to cause flooding problems in wet weather. Obviously, an audit is needed, to prove that an enormous number of gullies have been completely inoperative for years, and others persistently blocked. Local councillors or residents should not have to report these problems to the District Council.

The inclusion of **cardboard and kitchen waste** in material permitted in residents' green bins has been welcome. However, the lack of any progress towards extending 'blue box' **kerbside collections** for recycling to include cans and plastic, or the provision of town centre recycling bins for glass and cans etc. in conjunction with litter bins, has been disappointing.

MATLOCK'S TRANSPORT LINKS, PARKING AND TOWN CENTRE REGENERATION

While work by Severn Trent Water to renew sewers has continued in the past year and disrupted (or 'calmed') through traffic in Starkholmes, that work was eclipsed by the long awaited commencement in January of work on the construction of the **Sainsbury's supermarket** and **town centre relief road**. Progress of the works has been impressive and accelerated by unusually mild and dry winter weather. Construction of the **new traffic island** and river bridge, now under way in Bakewell Road has inevitably caused additional traffic congestion, and some scepticism about the sheer height of the new road junction, compared to the existing road, as well as its finished appearance. Sainsbury's have been slow to respond to the Mayor's suggestion of a design competition for the new traffic island.

Works in the **Cawdor Quarry** area to construct the new road and public car park are progressing in accordance with the original schedule, but the removal of all but a minimum 150 temporary parking spaces at any one time has created problems for town centre workers, as well as shoppers and visitors. The already completed west end of the car park appears to be poorly

designed and there has been disappointment that internal **landscaping** has been completely eliminated in the latest amendment to the scheme. Allegedly, the same will apply to the supermarket car park, thereby leaving an open view of the new store, parked cars, and traffic on the new road, from many residential areas on Matlock Bank, with associated increases in noise nuisance for many years to come. The Town Council, Civic Association and residents await with interest details of the apparently amended landscaping proposals for the entire scheme. Its ultimate success or otherwise will undoubtedly be determined largely by the quality and effectiveness of the external works and both hard and soft landscaping and tree screening.

Car parking itself will remain in seriously short supply, even after completion of the Cawdor scheme, so the District and County Councils need to investigate viable options for additional parking in the town centre eg. along Bakewell Road, west of the Dimple Road junction and as part of the Bakewell Road area scheme in the Masterplan proposals. 'Park and Ride' options should also be explored, otherwise Matlock will soon be at a disadvantage compared to its competitors.

As reported in previous years, there remains a serious and ongoing dispute in the **Matlock Bank** area between long-suffering residents and the **County Council** over on-street staff parking during weekdays. The continuing intransigence of the Council has been disappointing, despite many constructive suggestions for 'small-win' solutions on various streets, and yet it appears that the existing '**Prohibition of Driving**' Orders on several streets will be removed shortly. It is obvious to many people that the County Council needs to both increase its own on-site parking capacity at County Hall and in the vicinity of Chatsworth Hall, as well as extending and enforcing more effectively its car sharing scheme, among other possible solutions.

Town centre regeneration has been further discussed in great detail during the past year, as part of the extensive consultations over the **Masterplan**, still going through its various stages, currently under the auspices of the District Council. Design options for several key areas of the town centre, from the **Firs Parade** area, for instance, to the **Lido and Imperial Rooms** area have been put forward in some detail, by external consultants, as part of the required reports for ongoing public consultation, as well as consideration and ultimate approval by the Government. Hopefully, all these hurdles will be overcome and the finally agreed scheme progressed towards implementation.

TRAFFIC CALMING AND ROAD SAFETY

One of the original objectives of the Cawdor Quarry scheme, in the view of the District and Town Councils and Civic Association (in its 'Vision for Matlock') was the need to pedestrianise **Matlock Bridge** and most of Crown Square.

In recent months the County Council's original commitment to a specified experimental period of **pedestrianisation** has been in some doubt, despite the fact that Sainsbury's commitment, through their planning consent, to repaving and infrastructure works on and around the bridge will inevitably require temporary closure at some stage in the next few months.

As yet, there has been no consultation from the County Council about junction design proposals for **Crown Square**, despite the obvious urgency for an agreed scheme. There remain severe doubts that the scheme will achieve pedestrian safety, reduced signage, minimal 'cluttering' of the roadside and reduced traffic congestion compared to the existing situation. The likely segregation of traffic and pedestrians, with even more traffic signals, will undoubtedly exacerbate the present gridlock, with little relief for pedestrians and further damage to a valuable town centre focal point.

Discussions between the three Councils have been held in an attempt to agree an amenity lighting scheme for the revamped bridge.

One possible outcome of the **town centre regeneration** scheme may be a long awaited **highway repaving** scheme, preferably including areas of shared pedestrian / vehicular spaces to replace the present unsightly patched tarmac **pavements**.

TOWNSCAPE ENHANCEMENT

The Town Council has continued to enhance the town with **new seats** at the Park Head and extra floral planters. Plans are currently being discussed for a 'gateway' scheme at the Lime Tree Road / Lynholmes Road junction following a successful funding bid by a local community group on Hurst Farm. Other community initiatives, such as the **Wild Thyme garden**, impressed the **East Midlands in Bloom** judges last year, as did the part completed Bailey's Tump restoration scheme off Asker Lane, which is a credit to the Civic Association's efforts, and is now virtually finished. **Matlock** achieved a worthy **second place in the EMIB competition**, and Sheila Watts' garden in Dimple Road was awarded the 'best residential garden in the East Midlands' award.

HERITAGE CONSERVATION

The **Rockside** restoration and redevelopment scheme was finally completed during the past year, while **Riber Castle**, another long running saga, has seen absolutely no progress, despite having planning consent for well over a year.

The **Pic Tor** phase of the **Matlock Parks Heritage Lottery** funded project is now almost complete, with a new footbridge erected at Knowleston Place.

The **HERS scheme**, supported by the District and Town Councils and Civic Association, to grant aid **repair and restoration** works to properties in the **Dale Road / Matlock Bridge** Conservation Area has seen many additional schemes approved over the past year, but is shortly to be terminated, with the withdrawal of funding.

THE TOWN COUNCIL'S 'WATCHDOG' ROLE

The Council has made frequent representations to the District and County Councils about planning, highway and other environmental proposals, including reports concerning major planning issues and policies, waste disposal and children's play.

MSB/May 2007

BALANCE SHEET

March 2007

ASSETS

Royal Bank of Scotland Current Account	£4,897.47	
Royal Bank of Scotland Special Interest Account	£40,246.62	
Royal Bank of Scotland Treasury Reserve	£150,000.00	
Royal Bank of Scotland Mayors' Account	£2,692.30	
Petty Cash	£200.00	
Shares	£223.30	¹
Debtors	£4,025.02	
Total ASSETS		£202,284.71

LIABILITIES

Creditors	£31,800.85	
VAT Due	(£16,428.89)	
Deposits Collected	£98.60	
PAYE	£1,320.91	
NIC	£1,126.45	
Pension Contributions	£2,538.26	
Union Contributions	£131.18	
Total LIABILITIES		£20,587.36

NET ASSETS

£181,697.35

CAPITAL

Current Earnings	£6,163.12	
Historial Balancing Account	£175,534.23	
Total CAPITAL		£181,697.35

¹ At 11 May 2007 these shares were trading at £13,573.17

Centrica	378.00 x 324 shares =	£1,224.72
HBOS	1062.00 x 847 shares =	£8,995.14
National Grid	761.00 x 111 shares =	£844.71
BG Group	740.00 x 339 shares =	£2,508.60

PROFIT AND LOSS STATEMENT

April 2006 through March 2007

INCOME

2005-06			
£225,097.00	PRECEPT		<u>£232,000.00</u>
	Lettings		
	General	£17,376.78	
	Events	£3,043.73	
	Commercial	£9,381.55	
	Equipment Hire	£300.00	
£31,157.35	Total LETTINGS		<u>£30,102.06</u>
	Office Income		
	Photocopies	£47.10	
£27.54	Total OFFICE INCOME		<u>£47.10</u>
	Allotments		
	Allotment Rents	£1,030.00	
£859.50	Total ALLOTMENTS		<u>£1,030.00</u>
	Interest and Investments		
	Royal Bank of Scotland Interest	£10,448.17	
	Share Dividend	£408.56	
£8,224.80	Total INTEREST AND INVESTMENTS		<u>£10,856.73</u>
	Matlock in Bloom		
	Hanging Baskets	£2,715.00	
	Floral Displays	£60.00	
£2,451.91	Total MATLOCK IN BLOOM		<u>£2,775.00</u>
	Miscellaneous		
	Miscellaneous	£1,625.63	
	Mayor's Charity	£3,002.96	
£2,449.58	Total MISCELLANEOUS INCOME		<u>£4,628.59</u>
	Funding		
	Environmental Grants	£565.00	
	Rural Community Access Fund	£5,304.50	
	Awards for All	£11,975.06	
	NEE (DDEP)	£882.00	

£4,181.30	TOTAL FUNDING	<u>£18,726.56</u>
Farmers' Market		
Farmers' Market	£2,156.00	
Total FARMERS' MARKET		<u>£2,156.00</u>
Christmas Weekend		
Christmas Weekend	£14,035.77	
Total CHRISTMAS WEEKEND		<u>£14,035.77</u>
£274,448.98	TOTAL INCOME	<u>£316,357.81</u>

PROFIT AND LOSS STATEMENT

April 2006 through March 2007

EXPENSES

2005-06

Imperial Rooms

Business Rates	£7,144.50
Caretaker Supplies	£37.98
Personal Protective Equipment	£257.01
Maintenance and Improvements	£4,987.04
Heating & Toilet Refurbishment	£9,319.80
Imperial Rooms Miscellaneous	£156.67
Imperial Rooms Bad Debts	£115.00

Services

Heating (Gas)	£2,930.68
Lighting (Electricity)	£1,245.96
Water	£7,610.03
Waste Disposal	£893.10

£24,062.40	Total IMPERIAL ROOMS	<u>£34,697.77</u>
------------	----------------------	-------------------

Salaries

Caretakers	£23,741.28
Outdoor Staff	£24,492.00
Office Staff	£66,133.49
Employer's National Insce Contr.	£6,829.76
Employer's Pension Contributions	£22,347.43
Planning Consultancy	£0.00

£120,018.76	Total SALARIES	<u>£143,543.96</u>
-------------	----------------	--------------------

Annual Expenses

Audit Costs	£840.00
Entertainment Licences	£518.39
Annual Subscriptions	£946.26
Insurance	£6,004.45
Computer Contracts	£3,331.11

£6,884.51	Total ANNUAL EXPENSES	<u>£11,640.21</u>
-----------	-----------------------	-------------------

Office Expenditure

Postage	£1,129.26
Stationery	£250.73
Office Equipment	£282.47
Telephone	£1,372.66
Computer Equipment	£1,756.76
Photocopier rental and copies	£1,053.15

£9,414.22	Total OFFICE EXPENDITURE	<u>£5,845.03</u>
-----------	--------------------------	------------------

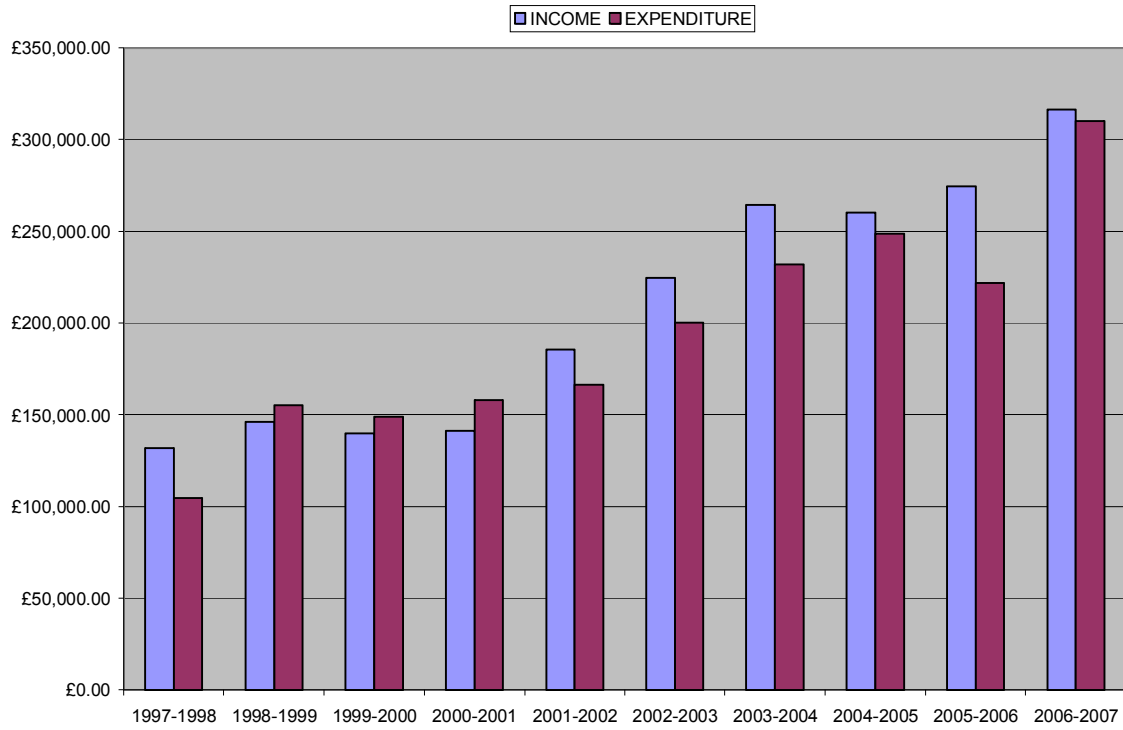
	Advertising		
	Adverts in Press	£56.00	
£973.93	Total ADVERTISING		<u>£56.00</u>
	Citizens Advice Bureau		
	Mid Derbyshire Citizens Advice Bureau	£2,000.00	
£1,000.00	Total CITIZENS ADVICE BUREAU		<u>£2,000.00</u>
	Grants - Section 137 Expenses		
£3,930.00	Community Grants	£3,300.00	
	Grant - Twinning	£1,500.00	
£669.00	Grant - D D V S S	£0.00	
	Scouts	£0.00	
£363.00	Remembrance Sunday	£585.26	
£2,000.00	HERS Project	£1,652.16	
	Total GRANTS		<u>£7,037.42</u>
	Environment		
	Footpath maintenance	£941.10	
	Denefields	£1,151.44	
	Equipment and maintenance of Street Furniture and maintenance	£1,277.34	
	Plants/Bulbs/Trees	£1,221.15	
	Environment - other	£196.33	
£16,585.68	Total ENVIRONMENT		<u>£5,152.88</u>
	Matlock in Bloom		
	Hanging Baskets	£1,394.68	
	Floral Displays	£3,023.70	
	Awards Evening	£110.52	
	Sunflower Competition	£33.69	
£5,173.18	Total MATLOCK IN BLOOM		<u>£4,562.59</u>
	Christmas Lights		
	Lightbulbs and refurbishment	£427.55	
	New Lighting	£5,460.00	
	Installation and removal	£10,192.43	
	Electricity Payments	£1,026.25	
£12,516.55	Total CHRISTMAS LIGHTS		<u>£17,106.23</u>
	Christmas Weekend		
	Christmas Weekend	£14,064.77	
£41.00	Total CHRISTMAS WEEKEND		<u>£14,064.77</u>

Mayor		
	Mayor's Allowance	£1,234.36
	Mayor's Charity	£1,406.56
£1,189.06	Total MAYOR'S ALLOWANCE	<u>£2,640.92</u>
Election Costs		
	Election Costs	£0.00
£0.00	Total ELECTION COSTS	<u>£0.00</u>
Miscellaneous		
	Miscellaneous expenses	£340.92
	Band Concerts	£220.00
	Courses/Seminars/Training	£0.00
	Publications/Literature	£94.44
	Stock adjustment	£1,757.44
£4,470.80	Total MISCELLANEOUS	<u>£2,412.80</u>
Vehicle Costs		
	Fuel	£2,547.23
	Maintenance	£4.71
	Insurance and Road Tax	£478.80
	Van Lease	£3,140.64
£6,066.89	Total VEHICLE COSTS	<u>£6,171.38</u>
Bus Shelters and Street Lights		
	Bus Shelters and Maintenance	£4,364.17
£0.00	Total BUS SHELTERS/MAINTENANCE	<u>£4,364.17</u>
Allotments		
	Allotment water charges	£244.25
	Allotment - Miscellaneous	£880.36
£217.00	Total ALLOTMENT EXPENSES	<u>£1,124.61</u>
Projects		
	Farmers' Market	£957.85
£3,563.22	Matlock Parks Project	£13,658.38
£2,500.00	Sports Hall/Swimming Baths	£2,500.00
	Christmas	£2,556.00
£189.60	Town Improvements-general	£11,371.24
	Catalyst Project	£0.00
	Awards for All	£8,314.48
	Rural Community Access Fund	£8,416.00
	Town Newsletter	£0.00
	Total PROJECTS	<u>£47,773.95</u>

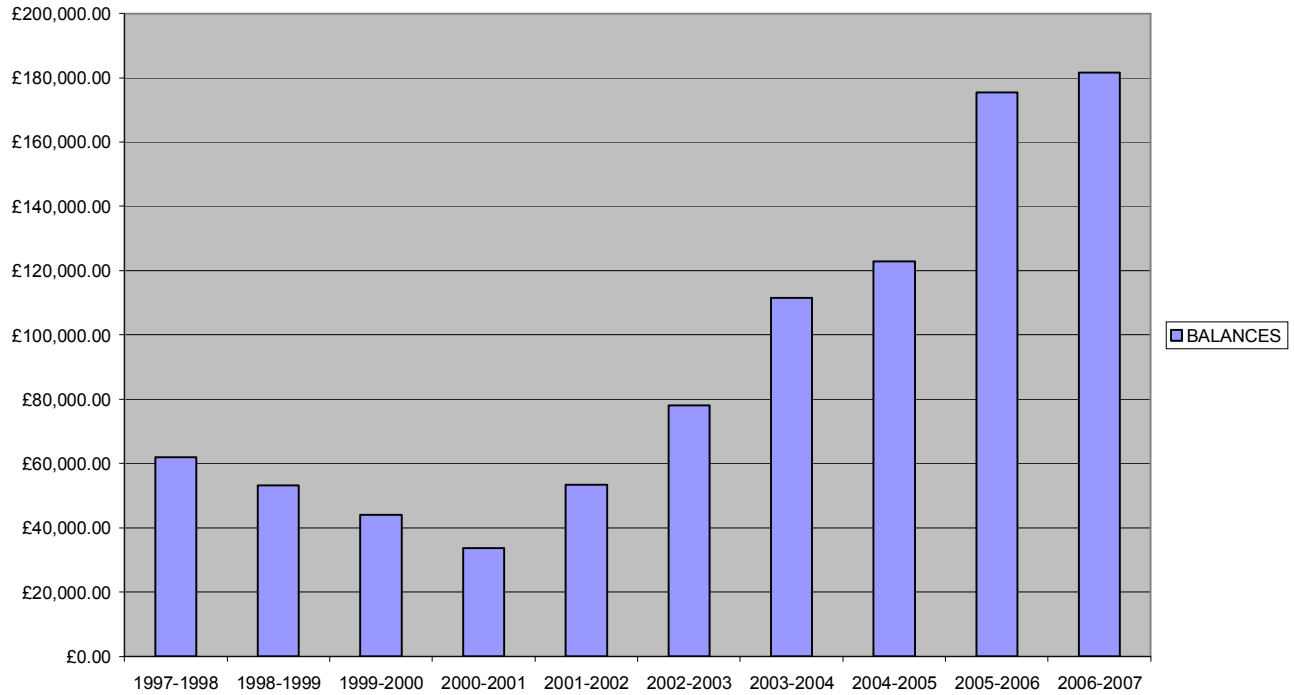
£221,828.80 TOTAL EXPENSES
£52,620.18 NET PROFIT/(LOSS)

£310,194.69
£6,163.12

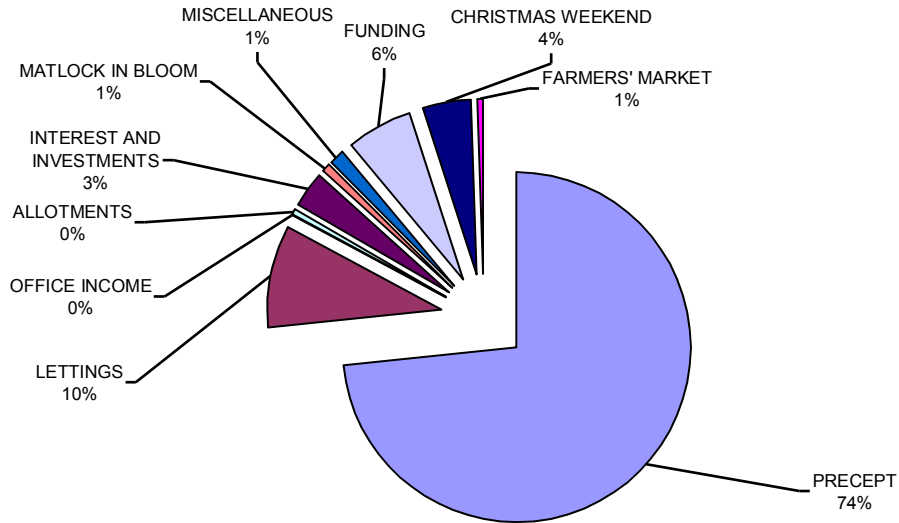
INCOME AND EXPENDITURE - YEARLY TRENDS



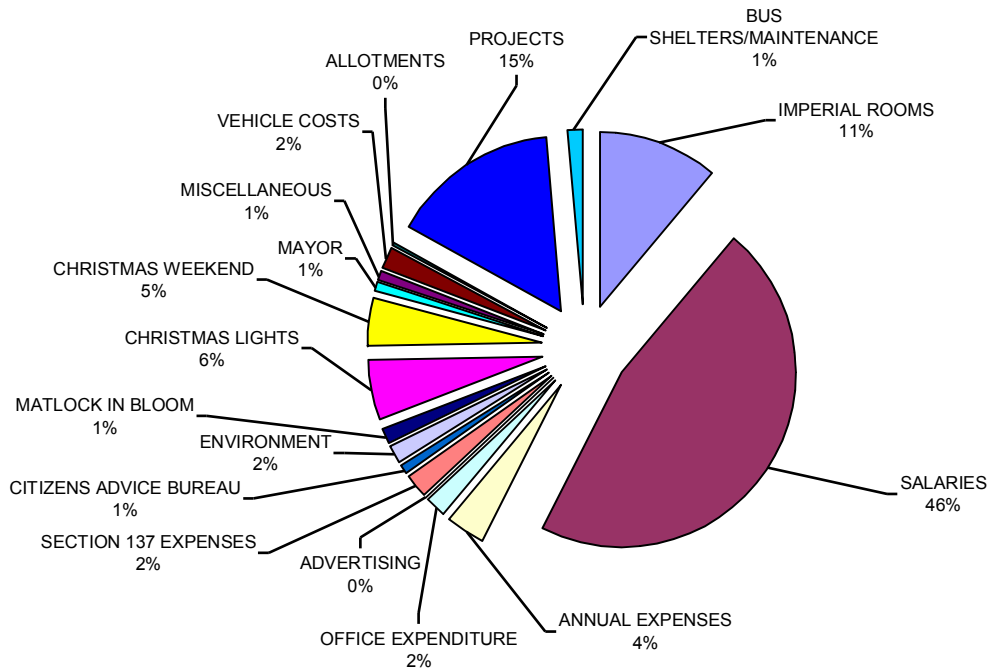
YEAR END BALANCES - TREND



INCOME AT A GLANCE



EXPENDITURE AT A GLANCE



MATLOCK TOWN COUNCIL

SUPPORTING NOTES YEAR ENDING 31 MARCH 2007

1 ASSETS

Movements in the Year:

(a) During the year the following assets were purchased at the cost shown:

	COST (£)
Baby Change Unit	154.49
2 New Heating Boilers	8,795.37
Replacement Hot Water Boiler	685.00
Computer equipment	<u>1,579.00</u>
	11,213.86

(b) During the year the following assets were sold for the amount shown:

	RECEIPT (£)
None	0.00

(c) At 31 March 2006 the following assets were held:

Asset:	Basis of valuation	Value (£)
Building - Imperial Rooms	Insurance	534,061.88
Fittings	Insurance	38,827.01
Office Equipment	Cost	16,889.76
Tools	Cost	7,356.52
External fixtures and fittings incl bus shelters, storage container, seats etc.	Cost	103,843.59

Land:

Allotments at Chesterfield Road 2.3 Acres <i>(Council legally obliged to maintain and provide the land for public allotment use)</i>		NIL
Land to the south of Megdale, Sheriff Fields <i>(known as Kiln Park)</i>		presently unknown
Land at the foot of Dimple Road <i>(known as Hillside Garden)</i>		presently unknown

(d) Investments

324 shares - **Centrica** - Nominal face value
111 shares – **National Grid** (Lattice) - Nominal face value
847 shares – **HBOS** (Halifax) - Nominal face value

339 shares – **BG Group** – Nominal face value

2 LEASES

Lease agreement	with	for	Monthly cost £
5141027	Lex Vehicle Leasing Ltd t/a Business Partner	Ford Ranger 2.5TD Regular 4x4m and Truckman Top Registration no: YP05 HJA	307.52
Terms – Year 2 <i>5 year contract, full maintenance. Annual mileage limit 10,000. 1 advance payment of £922.55 followed by 59 monthly payments. Excess mileage 7.6 pence per mile.</i>			
1 March 2007 to 28 Feb. 2013	Derbyshire Dales District Council	Land at Denefields, off Chesterfield Road, Matlock	1 payment of £25.00
50 year lease from 28 March 2006	The Presentation Sisters of the BVM English Province	Land at Bailey's Tump, Asker Lane, Matlock	Peppercorn

3 BORROWINGS

None

4 DEBTS OUTSTANDING

As at 31 March 2007 debts of £4,025.02 were outstanding and due to the Council.

	VALUE (£)
Less than 1 month old	2,528.69
Between 1 and 2 months	588.73
Between 2 and 3 months	894.60
Between 3 and 6 months	64.00
Over 6 months old	0.00
	<u>4,025.02</u>

5 TENANCIES

During the year the following tenancies were held:

Council as Landlord:

Tenant	Property	Rent p.a.(£)
Allotment holders	51.5 plots at Chesterfield Road	20.00 per plot

6 137 PAYMENTS

Section 137 of the Local Government Act 1972 enables parish councils to spend up to the product of £5.44 per head of electorate for the benefit of people in the area on activities or projects not specifically authorised by other powers.

The limit for this Council in the year ended 31 March 2007 was £41,251.52 and the payments made were as follows:

Payee	Nature of payment	£
North Derbyshire Forum	Community Grant	250.00
Vitalise	Community Grant	100.00
Derwent Rural Counselling Service	Community Grant	500.00
Matlock Live	Community Grant	300.00
Matlock Twinning Association	Community Grant	1,500.00
Derbyshire Coalition for Inclusive Living	Community Grant	250.00
Starkholmes and District Thursday Club	Community Grant	150.00
Derwent and Dove District Scout Council	Community Grant	1,000.00
Victim Support Derbyshire	Community Grant	250.00
Mid Derbyshire Citizens Advice Bureau	Grant	2,000.00
H E R S Project	Grant	1,652.16
Remembrance Sunday	Grant	585.26
Awards for All – <i>Saturday Kids Clubs</i> <i>Summer Holiday sessions</i>	Match Funding	600.00
	TOTAL	<u>9,137.42</u>

7 AGENCY WORK

During the year the Council undertook no agency work on behalf of other authorities.

8 ADVERTISING AND PUBLICITY

The following costs for advertising and publicity were incurred during the year:

Advertising and publicity	£
	<u>56.00</u>
	<u>56.00</u>

9 PENSIONS

The Council holds a Pension Scheme for its employees through Derbyshire County Council. This is linked to the Local Government Pension Scheme. Employers payments made during the year amount to £ 22,347.43.

10 CONTINGENT LIABILITIES

The following provision has been made to cover costs incurred at elections:

Election expenses	Financial Year 2003-2004	800.00
Election expenses	Financial Year 2004-2005	800.00
Election expenses	Financial Year 2005-2006	800.00
Election expenses	Financial Year 2006-2007	<u>800.00</u>
		<u>2,400.00</u>

11 CAPITAL RESERVES

None

12 EARMARKED RESERVES

None

Signed: ...*D T Barker*....

Chairman

Signed:

S. C. Smith.

Town Clerk/RFO

Date:

04 June 2007

Date:

04 June 2007